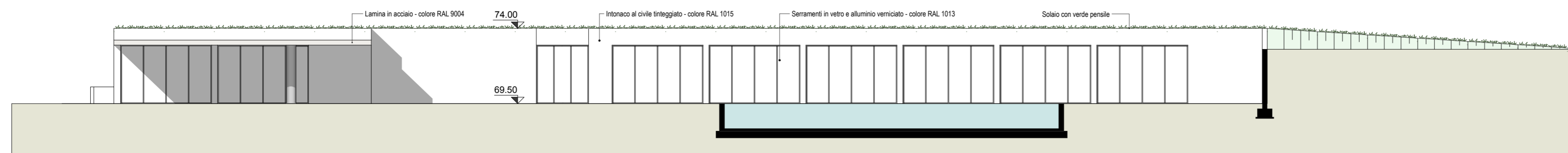
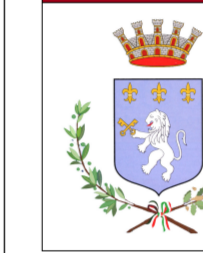


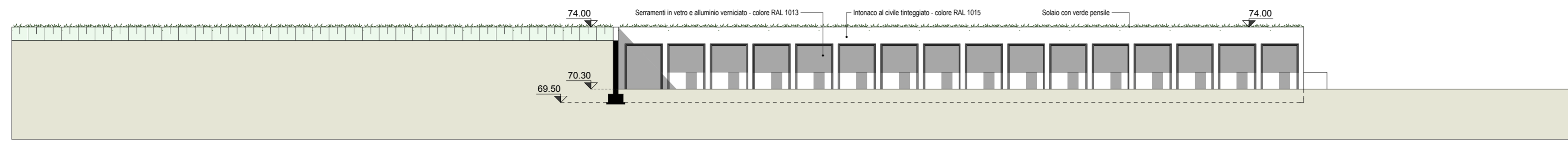
Committenti	rev.	data
URBANI S.R.L. Via Virgilio, 8 37012 Bussolengo (VR) C.F. - P.Iva 0229780235	R00	Ottobre 2015
GOBO S.A.R.L. Via Virgilio, 8 37012 Bussolengo (VR) C.F. - P.Iva 01731890982		
GOBO S.R.L. 37015 Desenzano del Garda (BS) C.F. - P.Iva 01731890982		

Progettista
Arch. Massimo Marai Viale Venezia n. 89 25123 Brescia C.F. MRA MSM 58B14 B157W P.I. 03605730989

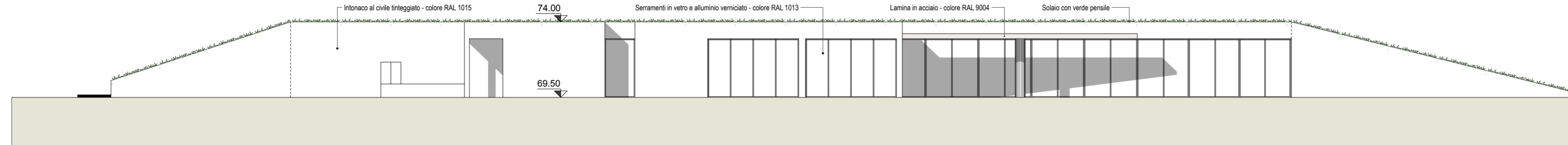
PROSPETTI	TAVOLA T12 SU
	scala 1:200



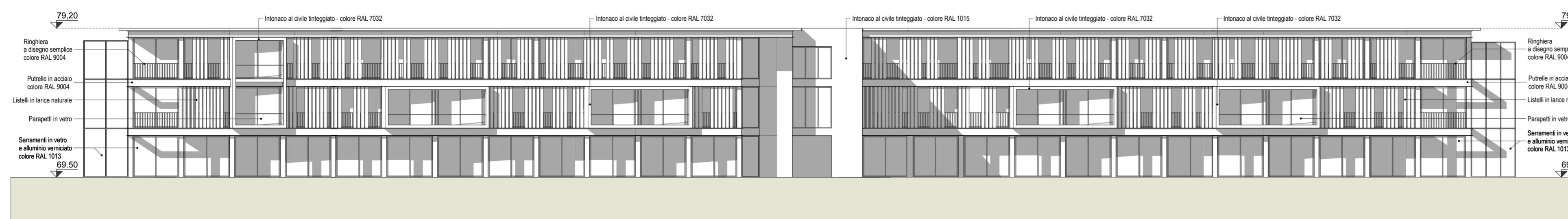
EDIFICIO 1 - prospetto Nord



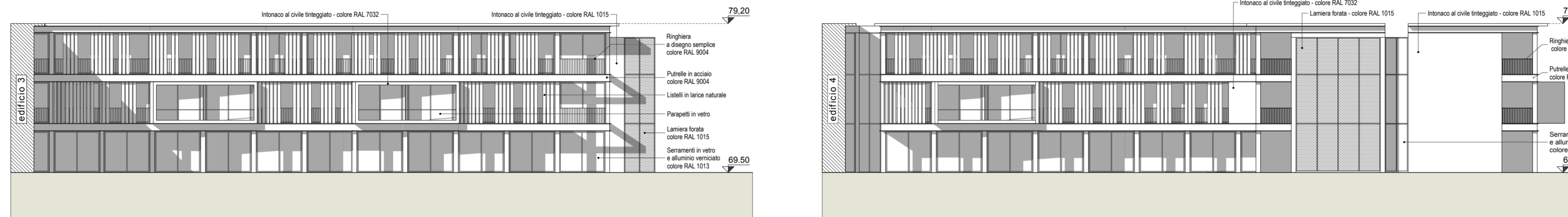
EDIFICIO 1 - prospetto Sud



EDIFICIO 1 - prospetto Est

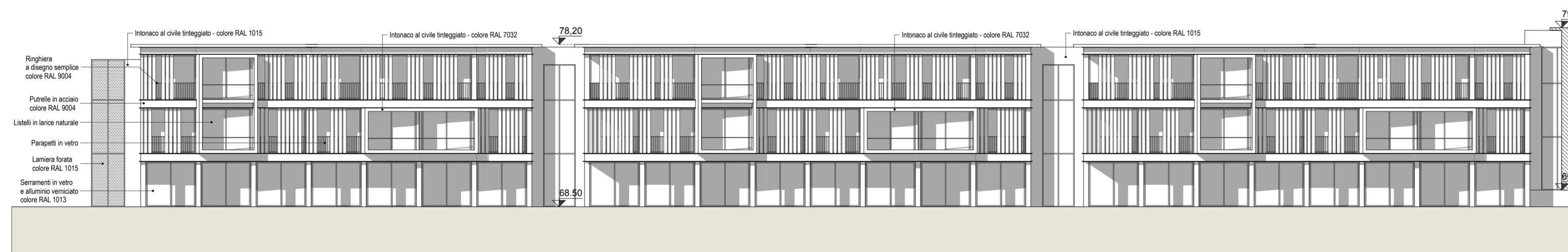


EDIFICI 2-3-4 - prospetto Ovest

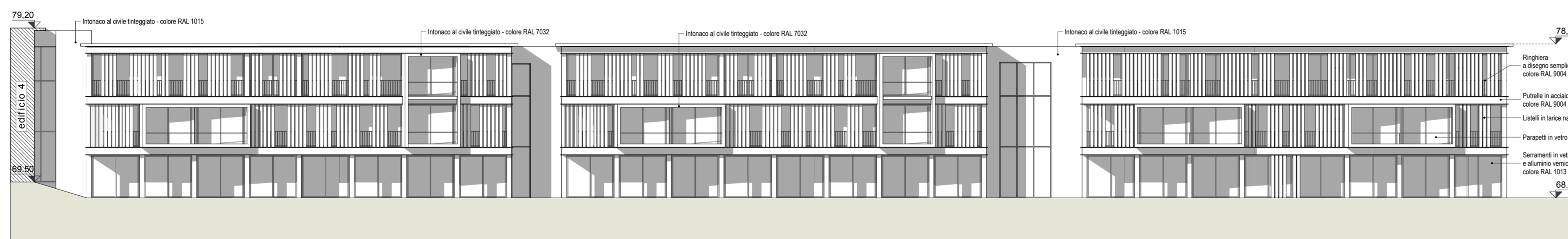


EDIFICIO 2 - prospetto Est

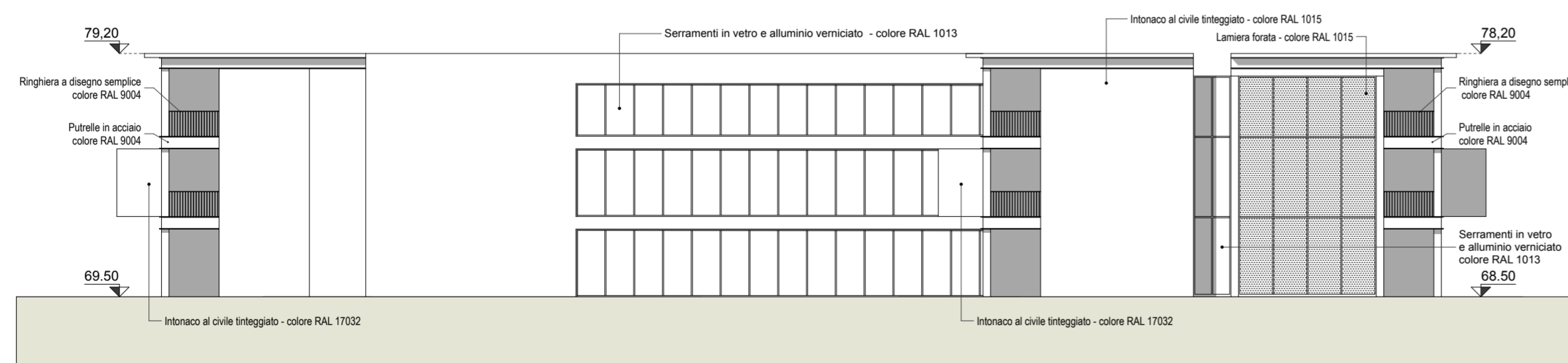
EDIFICI 2 e 3 - prospetto Nord



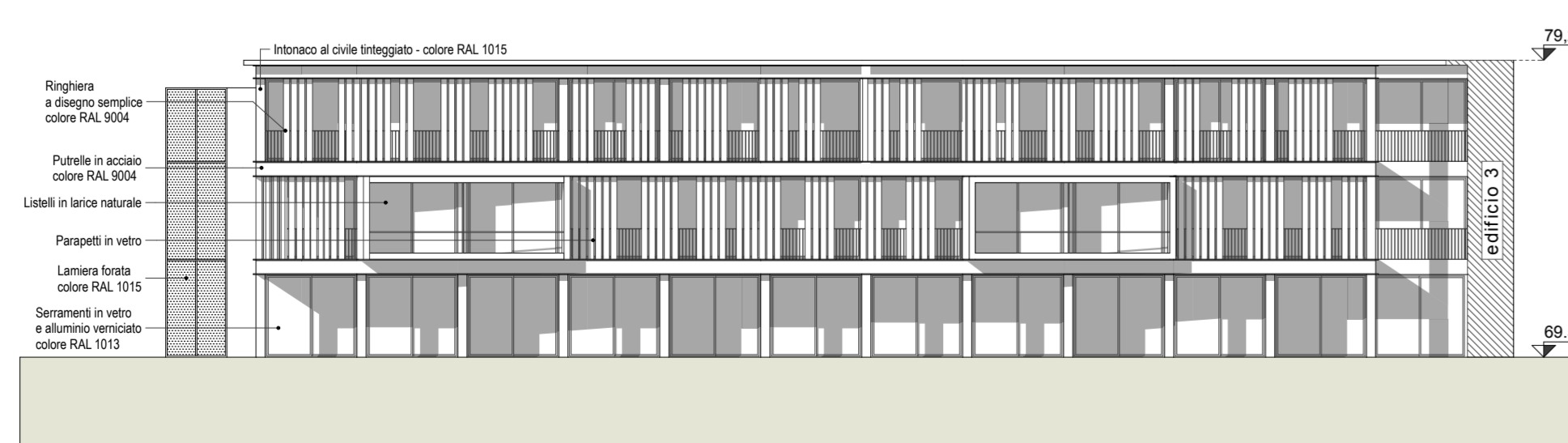
EDIFICI 5 - 6 - 7 - prospetto Nord-Ovest



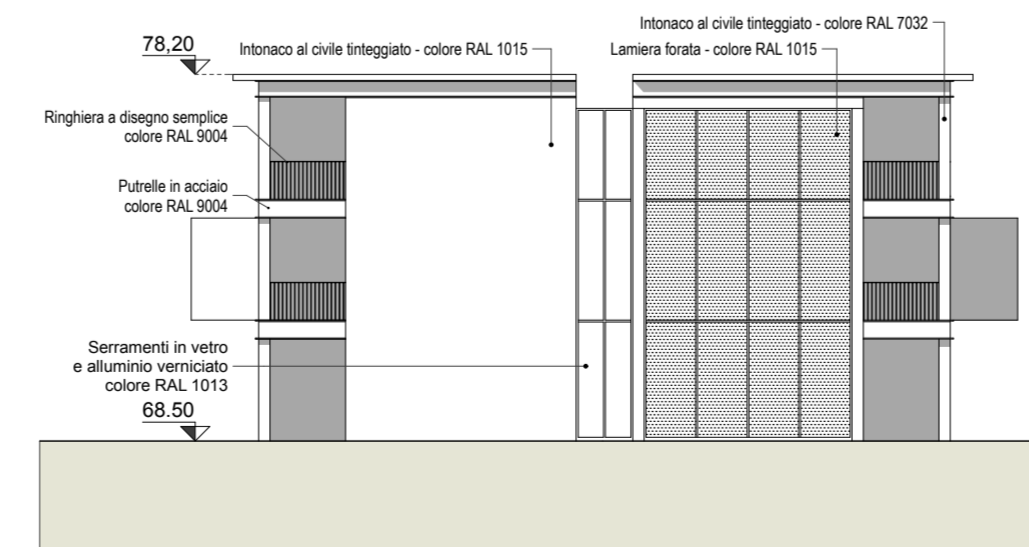
EDIFICI 5 - 6 - 7 - prospetto Sud-Est



EDIFICI 2-3-4 - prospetto Sud



EDIFICIO 4 - prospetto Est



EDIFICIO 7 - prospetto Nord-Est



SCHEMA INDIVIDUAZIONE CORPI EDILIZI